



Do you have a fly problem? Are you looking for a more natural solution? If you answer “yes” to both of these questions then our natural fly solution could be the answer you’re looking for.

**As horse owners the common house fly is a problem that most of us and our horses endure each summer. With so many remedies, cures and fly prevention products available it is often confusing as to which ones to choose.**

Many of us in our efforts to become more environmentally friendly and globally aware are looking for a more natural, holistic solution and what is more natural than another insect... in fact a parasitic wasp.

As the weather becomes milder, the days become longer and the grass gets greener, animals kept in a confined environment will attract flies, and manure is the ideal breeding ground. Our equine friends are not the only species to be affected by flies. Chickens and chicken houses suffer horribly from fly problems, and have been using parasitic wasps successfully for many years to remedy this.



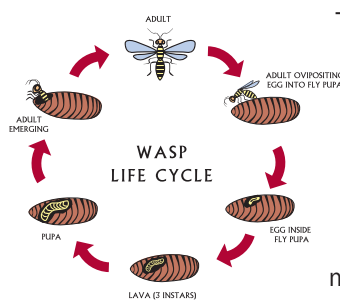
### What are parasitic Wasps?

Parasitic wasps are tiny insects that are reared in an insectary in Texas, USA. They are completely safe to use and do not bother horses or humans. Once hatched they are 2mm in size and are difficult to see.

### So how do they work?

These insectary reared wasps arrive in the UK whilst still inside the pupae. Depending on the scale of the fly problem and the size of the manure heap these wasps are released into the most affected areas of your stable yard and left to do their work. By the time of distribution the adult wasps are ready to emerge, breed and lay their eggs.

The released wasps deposit their eggs into the fly pupa, the wasp kills the fly and consumes the fly body therefore disrupting the fly life cycle and preventing them breeding. Once the fly population is eliminated or reduced the wasp population will also decline as they have no fly's to prey on. Insectary reared wasps prey on flies reducing and ultimately eliminating the population, relieving your horse or pony of these troublesome pests!



This holistic biological approach is not a quick fix and we should start considering their use just before the fly season starts. By applying the parasitic wasps early to the areas of your stables or yard where fly populations breed, such as manure heaps, it will allow the wasp population to build and give them a better chance against the flies.

It is also essential that you continue to add to the wasp population every fortnight during the breeding season.

You will need to apply the wasps every 2 weeks for about 6 times during the early part of the season to build up the level of parasites. The wasps should be applied to the dung heap and anywhere where there is residual faeces such as around walls. At the same time you need to reduce new flies coming into the premises and to do this you should use pheromone traps which will capture flies and prevent them breeding. In this way you both destroy the fly pupae and reduce new flies arriving at the stables. If you spread manure on pasture near to the stables, then the wasps will hatch out on the pasture and help to reduce new flies arriving at the stable

### Advantages of using parasitic wasps

- Safe to use and does not harm humans, animals or the environment
- Easy to apply
- An natural control method without the use of chemicals



Parasitic Wasps are supplied in sealed paper bags whilst still inside their pupa. Whilst in transit and storage in the UK they are kept at a low temperature to discourage hatching. As the flies are distributed onto the muck heaps, they will increase in temperature and start hatching.

For further information and enquiries please contact; EquiEssence Natural horsecare on **01392 877896**, or email **info@equiessence.co.uk**.

For a price guide and usage instructions please visit our online shop at **www.nutwellsaddlery.co.uk**.